

Component Replacement

- electrical -



Xperia™ Z1 Compact
D5503, M51w

CONTENTS

1 Replaceable Components 3

2 Component Placing..... 5

3 Additional Repair info 6

4 Revision History 12

For general information about electrical repair related issues, refer to 1220-1336: Generic Repair Manual - electrical

Test after electrical replacement: refer to 1273-1772 Mechanical Test Instruction

Do not remove shield can lids (Heat pasta are added and RF performance will be damaged)

1 Replaceable Components

EXPLANATION OF ABBREVIATIONS USED IN THE COLUMN 'COMMENTS' BELOW

COMPONENT LOCATION

P = Primary side

S = Secondary side

REPAIR METHOD

HA = Hot Air (removal & mounting)

ST = Soldering Tool (removal & mounting)

HA/ST = Hot Air for removal - Soldering Tool for mounting

BGA = BGA Station

BH = Bottom Heater

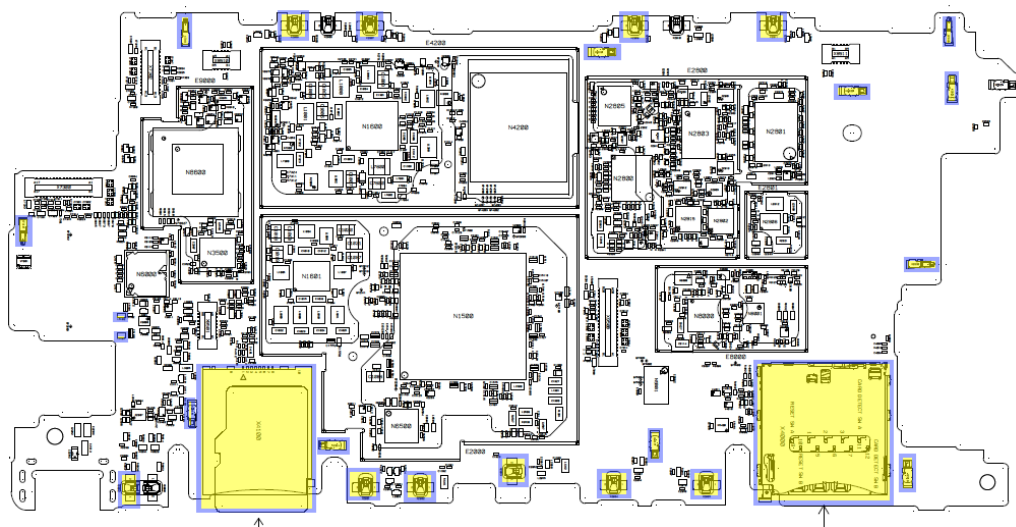
ADDITIONAL INFORMATION

⇒1 (2,3,4, etc.) = Proceed to 'Additional Repair Info' for further instructions in the indicated section(s).

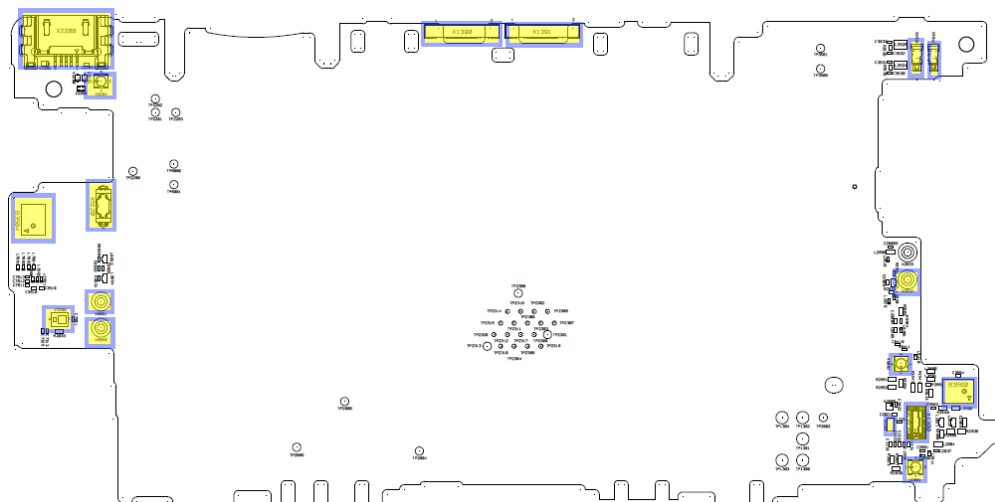
Position	Component	Part no.	Comments
B3504	Microphone	1210-7410	S HA+BH ⇒1
B3560	Mic 3.76 Silicon LT25	1264-2635	S HA+BH ⇒24
L5101	Ferrite B 0.28 Ohm 0.5 A 0402	1270-3400	P HA+BH ⇒2
L5102	Ferrite B 0.28 Ohm 0.5 A 0402	1270-3400	P HA+BH ⇒2
R1304	Resistor 0.01 Ohm +/-1% 200.0 mW (1.6x0.	1238-2147	S HA+BH ⇒3
V7800	LED White 1.63 x 2.03 x 0.75 mm Flash LE	1267-1941	S HA+BH ⇒4
X1300	Conn BtB Receptacle 3p SMK / FB6 series	1276-6471	S HA+BH ⇒5
X1390	Conn Leaf Spring Plug 1p	1275-2490	S HA+BH ⇒6
X1391	Conn Leaf Spring Plug 1p	1275-2490	S HA+BH ⇒6
X2200	Conn USB B Receptacle 5p	1270-2769	S HA+BH or BGA ⇒7
X2801	Conn Coax Receptacle 1p	1237-5326	S HA+BH ⇒8
X2804	Conn Coax Receptacle 1p	1237-5326	S HA+BH ⇒9
X2813	Conn Leaf Spring Plug 1p Antenna/Groundi	1238-5878	P HA+BH ⇒10
X2814	Conn Leaf Spring Plug 1p Antenna/Groundi	1238-5878	P HA+BH ⇒10
X2815	Conn Leaf Spring Plug 1p Antenna/Groundi	1238-5878	P HA+BH ⇒11
X2816	Conn Leaf Spring Plug 1p Antenna/Groundi	1238-5878	P HA+BH ⇒11
X2819	Conn Leaf Spring Plug 1p Antenna/Groundi	1238-5878	P HA+BH ⇒12
X2820	Conn Leaf Spring Plug 1p Antenna/Groundi	1238-5878	P HA+BH ⇒12
X2821	Conn Leaf Spring Plug 1p Antenna/Groundi	1238-5878	P HA+BH ⇒12
X2826	Conn Leaf Spring Plug 1p Antenna/GND Spr	1239-2123	P HA+BH ⇒13
X2830	Conn Leaf Spring Plug 1p Antenna/GND Spr	1239-2123	P HA+BH ⇒13
X2832	Conn Pogopin Plug 1p	1248-5127	S HA+BH ⇒14
X2901	Conn Leaf Spring Plug 1p Mid mount Type	1275-0410	P HA+BH ⇒15
X2902	Conn Leaf Spring Plug 1p Mid mount Type	1275-0410	P HA+BH ⇒15
X2903	Conn Leaf Spring Plug 1p Mid mount Type	1275-0410	P HA+BH ⇒15
X2904	Conn Leaf Spring Plug 1p Mid mount Type	1275-0410	P HA+BH ⇒15
X2905	Conn Leaf Spring Plug 1p Mid mount Type	1275-0410	P HA+BH ⇒15
X2906	Conn Leaf Spring Plug 1p Mid mount Type	1275-0410	P HA+BH ⇒15
X2907	Conn Leaf Spring Plug 1p Mid mount Type	1275-0410	P HA+BH ⇒15
X2909	Conn Leaf Spring Plug 1p Mid mount Type	1275-0410	P HA+BH ⇒15
X2911	Conn Leaf Spring Plug 1p Mid mount Type	1275-0410	P HA+BH ⇒15
X3510	Conn Leaf Spring Plug 1p Antenna/Groundi	1238-5882	S HA+BH ⇒16
X3511	Conn Leaf Spring Plug 1p Antenna/Groundi	1238-5882	S HA+BH ⇒16
X4000	Card Conn SIM	1271-9742	P HA+BH or BGA ⇒17
X4100	Card Conn Micro SD	1254-2021	P HA+BH or BGA ⇒18
X5120	Conn WtB Receptacle 2p	1206-4855	S HA+BH ⇒19
X7310	Conn Leaf Spring Plug 1p Antenna/GND Spr	1239-2123	P HA+BH ⇒20
X7311	Conn Leaf Spring Plug 1p Antenna/GND Spr	1239-2123	P HA+BH ⇒20
X8001	Conn Coax Receptacle 1p	1237-5326	S HA+BH ⇒21
X8002	Conn Leaf Spring Plug 1p Mid mount Type	1275-0410	P HA+BH ⇒22
X8650	Conn Leaf Spring Plug 1p Mid mount Type	1244-5427	S HA+BH ⇒23
X8651	Conn Leaf Spring Plug 1p Mid mount Type	1244-5427	S HA+BH ⇒23

2 Component Placing

To access the Component Placing document, double-click the icon below.
Applicable for on-screen viewing only – icon not shown on hard-copies.



Primary side



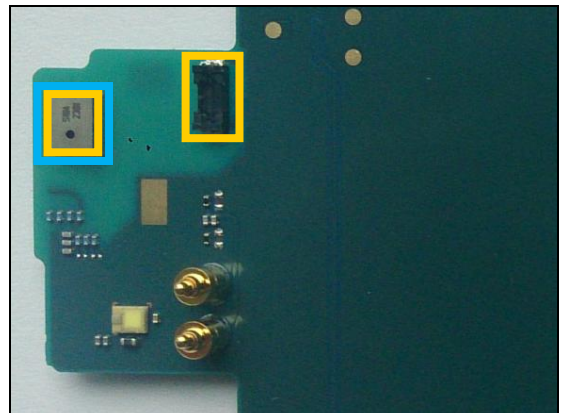
Secondary side

3 Additional Repair info

1

B3504

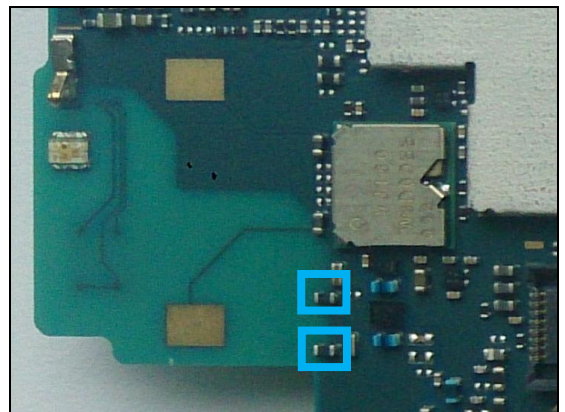
Replace if no audio from secondary mic
Protect the BtB connectors with capton tape!
When replacing protect secondary mic with capton tape!



2

L5101, L5102

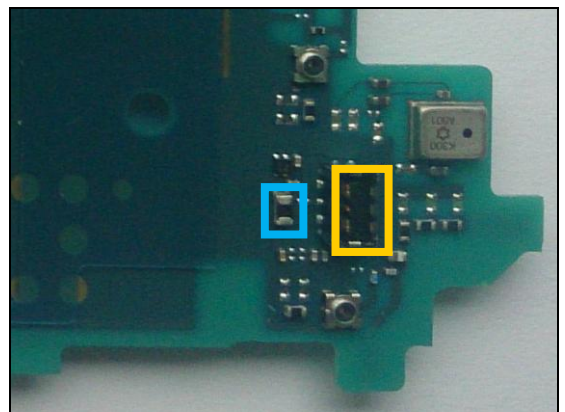
Replace if open circuit (Vibrator not working)



3

R1304

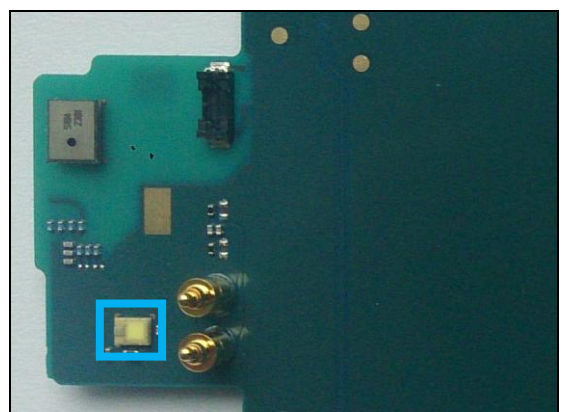
Replace if open circuit (Phone Dead)
Protect the BtB connector with capton tape!



4

V7800

Replace if Flash LED not working

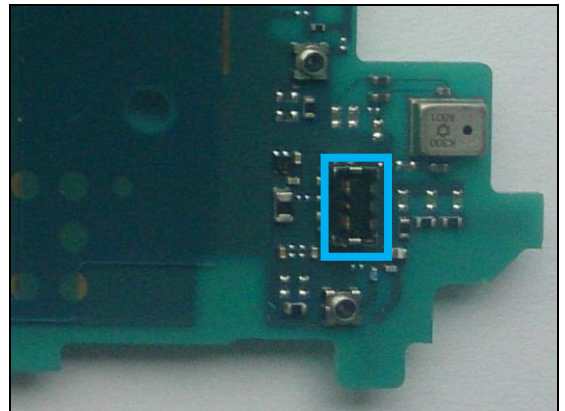


Repair Actions: Additional Repair Info

5

X1300

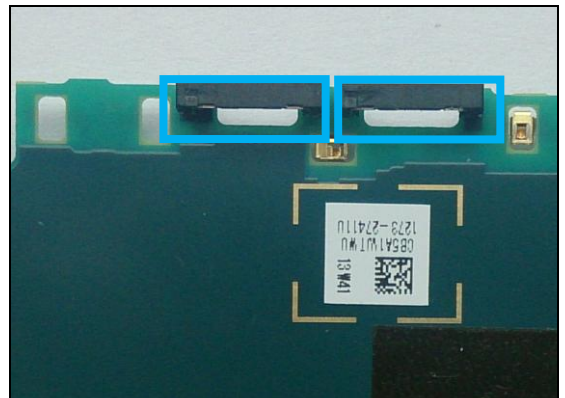
Replace if mechanical damaged. (Phone dead or power off)



6

X1390, X1391

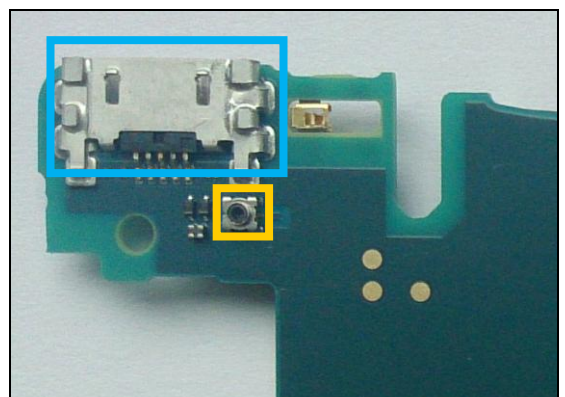
Replace if mechanical damaged. (Magnet charger not working)



7

X2200

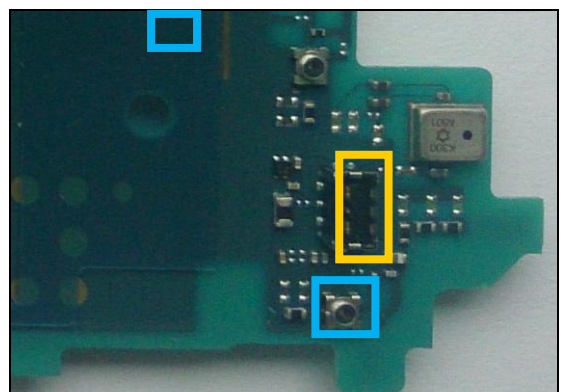
Replace if mechanical damaged (USB charger or data transfer not working)
Protect the RF connector with capton tape!



8

X2801

Replace if open circuit 1-2 (No or bad network, main antenna)
Protect the BtB connector with capton tape!

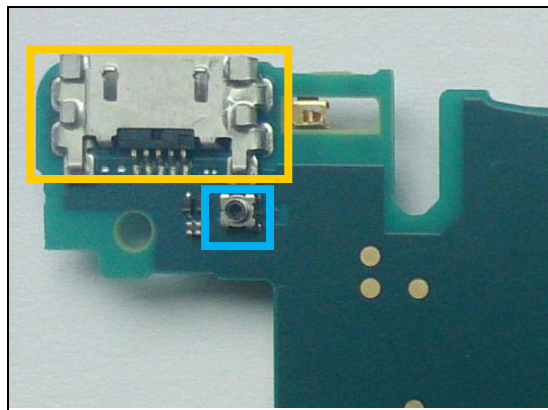


Repair Actions: Additional Repair Info

9

X2804

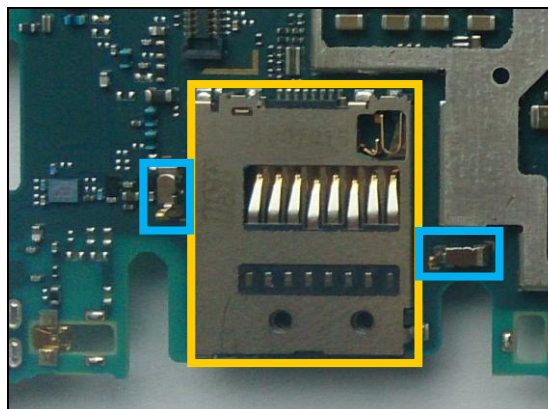
*Replace if open circuit 1-2 (No or bad GPS)
Protect the USB connector with capton tape!*



10

X2813, X2814

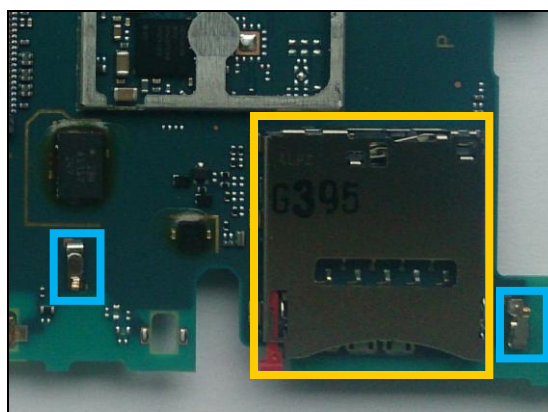
*Replace if mechanical damaged (Grounding Pin)
Protect the SD card connector with capton tape!*



11

X2815, X2816

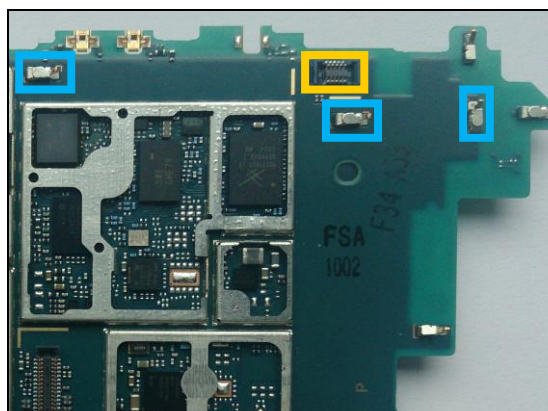
*Replace if mechanical damaged (Grounding Pin)
Protect the SIM card connector with capton tape!*



12

X2819, X2820, X2821

*Replace if mechanical damaged (Grounding Pin)
Protect the BtB connector with capton tape!*

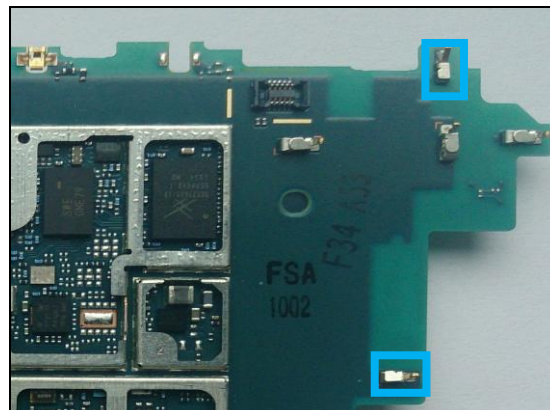


Repair Actions: Additional Repair Info

13

X2826, X2830

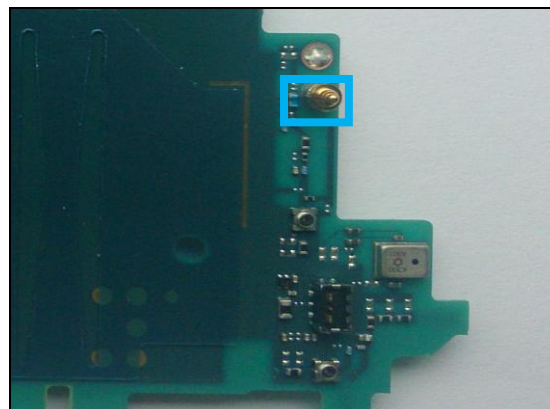
Replace if mechanical damaged (No or bad network, main antenna)



14

X2832

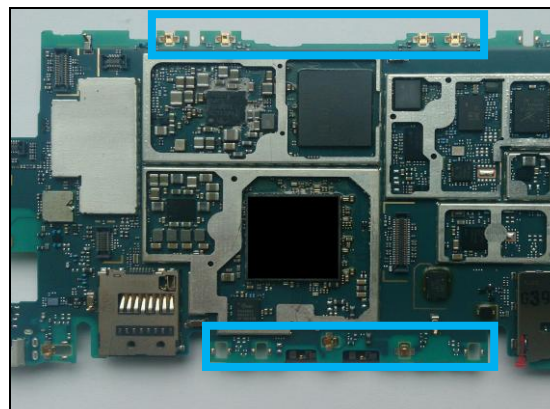
Replace if mechanical damaged (no or bad WLAN/ BT)



15

X2901, X2902, X2903, X2904, X2905, X2906, X2907, X2909, X2911

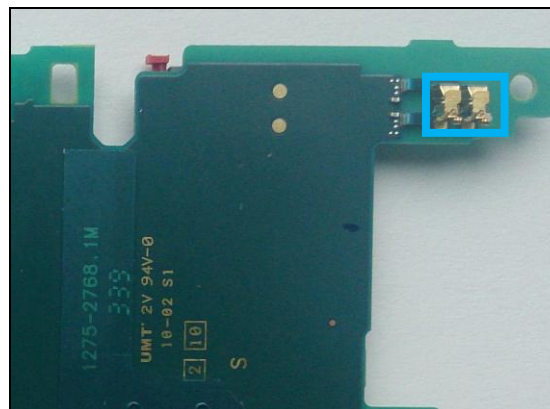
Replace if mechanical damaged (Grounding Pin)



16

X3510, X3511

Replace if mechanical damaged (No speaker)

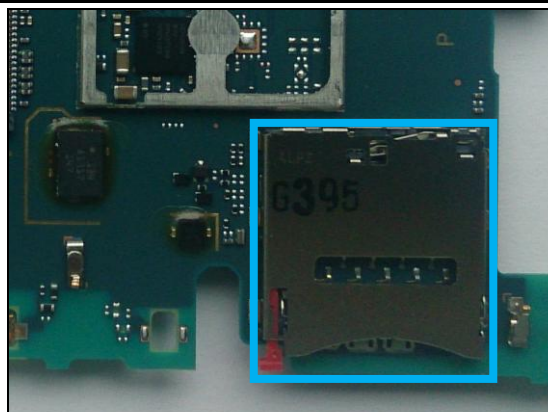


Repair Actions: Additional Repair Info

17

X4000

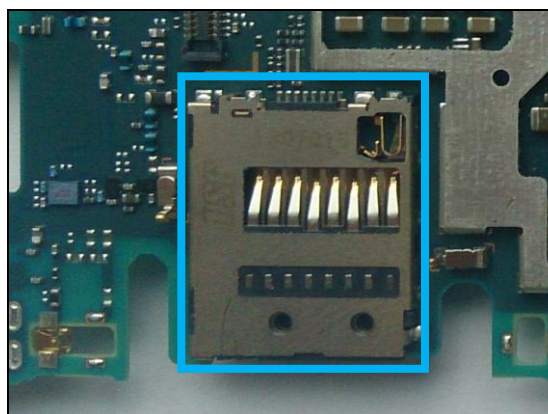
Replace if mechanical damaged (No network, restart, No SIM card inserted)



18

X4100

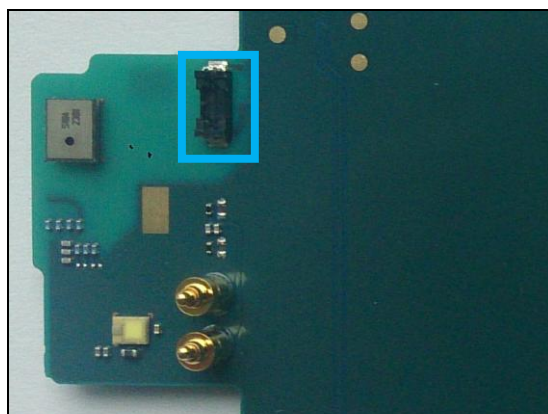
Replace if mechanical damaged (No SD card)



19

X5120

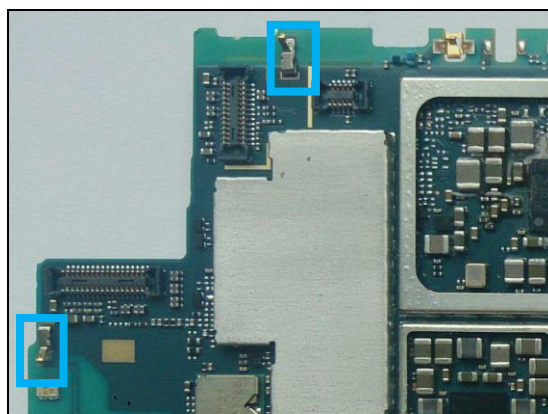
Replace if mechanical damaged (Vibrator not working)



20

X7310, X7311

Replace if mechanical damaged (Grounding Pin)

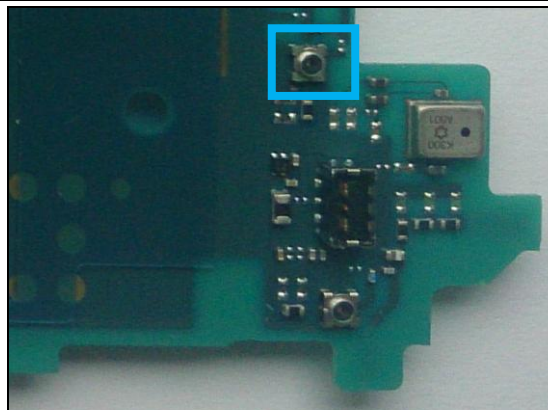


Repair Actions: Additional Repair Info

21

X8001

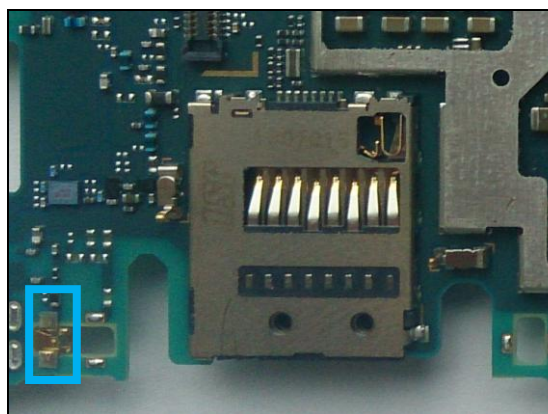
Replace if open circuit 1-2 (No or bad WLAN / BT)



22

X8002

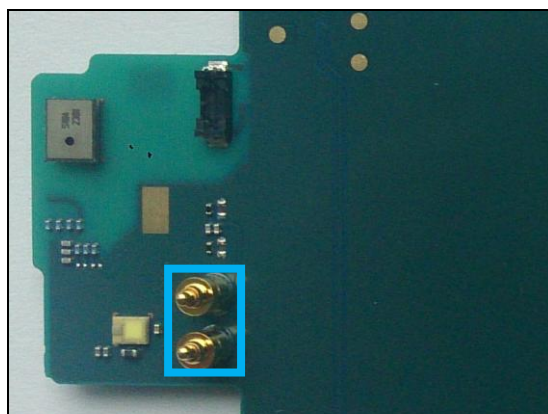
Replace if mechanical damaged (No or bad GPS)



23

X8650, X8651

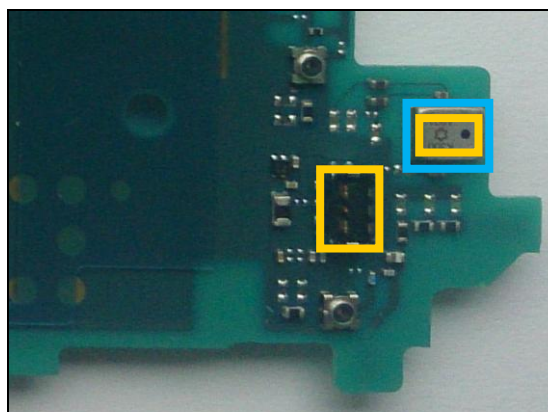
Replace if mechanical damaged (No or bad NFC)



24

B3560

Replace if no audio from primary mic
Protect the BtB connectors with capton tape!
When replacing protect primary mic with capton tape!



4 Revision History

Rev.	Date	Changes / Comments
1	2014-04-08	Initial release
2	2014-07-11	B3560 added

